

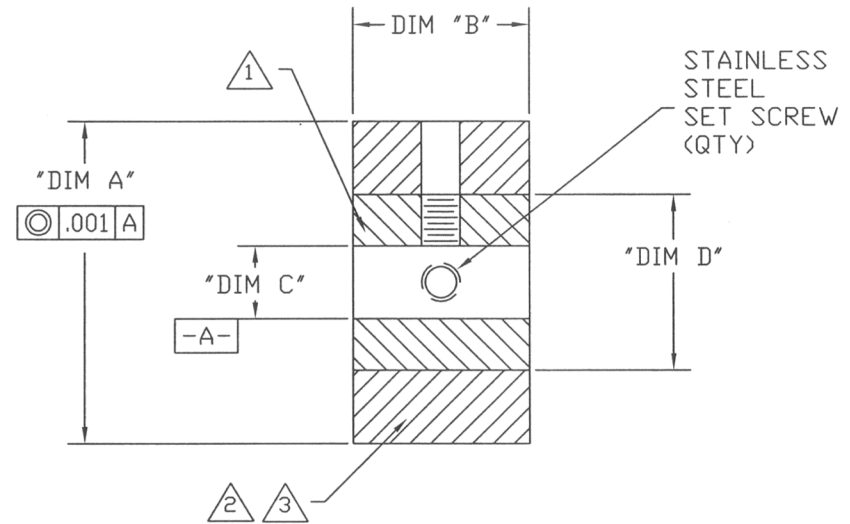
REVISIONS

REV	MOD	DESCRIPTION	DATE

TABLE FOR STANDARD HUBLESS DRIVE ROLLERS

PART NUMBER △ 3	DIM A ROLLER DIAMETER ±.003	DIM B ROLLER WIDTH ±.010	DIM C BORE DIAMETER +.0002 +.0007	DIM D CORE DIAMETER ±.010	SET SCREW SIZE (QTY)
502-ZZ	1/2	1/4	3/16	3/8	6-32 (1)
504-ZZ	1/2	1/2	3/16	3/8	6-32 (1)
506-ZZ	1/2	3/8	1/4	3/8	6-32 (1)
507-ZZ	1/2	1/2	1/4	3/8	6-32 (1)
509-ZZ	5/8	3/8	3/16	7/16	6-32 (1)
510-ZZ	5/8	1/2	3/16	7/16	6-32 (1)
511-ZZ	5/8	5/8	3/16	7/16	6-32 (2)
513-ZZ	5/8	3/8	1/4	7/16	6-32 (2)
514-ZZ	5/8	1/2	1/4	7/16	6-32 (2)
515-ZZ	5/8	5/8	1/4	7/16	6-32 (2)
517-ZZ	3/4	1/2	1/4	7/16	6-32 (2)
518-ZZ	3/4	5/8	1/4	7/16	6-32 (2)
519-ZZ	3/4	3/4	1/4	7/16	6-32 (2)
602-ZZ	1	1/2	1/4	3/4	8-32 (2)
604-ZZ	1 1/4	3/4	5/16	3/4	8-32 (2)
606-ZZ	1 5/8	3/4	3/8	1	10-32 (2)
608-ZZ	2	3/4	3/8	1 1/2	10-32 (2)
610-ZZ	2 1/2	1	1/2	1 1/2	1/4-28 (2)

CROSS SECTIONAL VIEW THROUGH CENTER LINE OF ROLLER



NOTES:

- △
1 CORE - 303 SATINLESS STEEL
- △
2 POLYURETHANE, POLYESTER: 55A BLUE OR 70A ORANGE
- △
3 -ZZ PORTION OF PART NUMBER REFERS TO HARDNESS FOR 55A USE -55 & FOR 70A USE -70

TOLERANCES:	POLYDRIVE INDUSTRIES MESA, ARIZONA	
UNLESS OTHERWISE SPECIFIED ALL DIMENSIONS ARE IN INCHES	PART NO. SEE TABLE	REV A
	HUBLESS DRIVE ROLLER, STANDARD	
	SCALE: NONE	DATE: 11/30/01
	DRAWN BY: PM	
MATERIAL: SEE ABOVE		