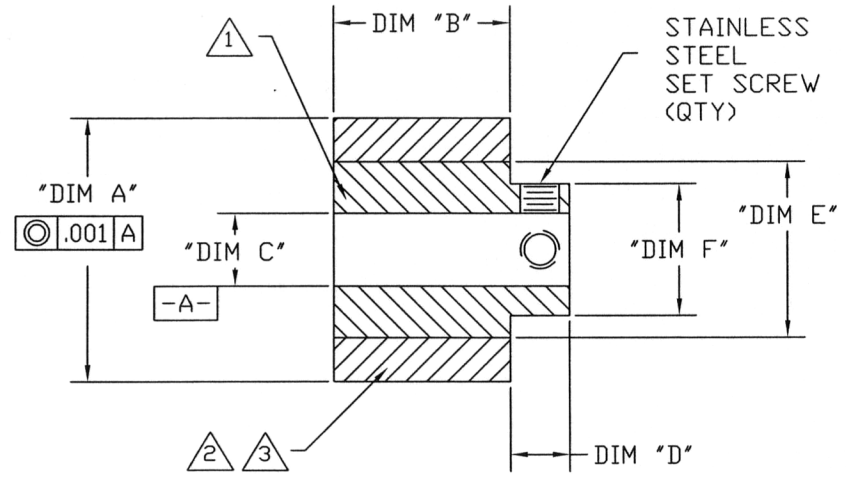


REVISIONS			
REV	MOD	DESCRIPTION	DATE

TABLE FOR STANDARD HUBBED DRIVE ROLLERS

PART NUMBER △3	DIM A ROLLER DIAMETER ±.003	DIM B ROLLER WIDTH ±.010	DIM C BORE DIAMETER +.0002 +.0007	DIM D HUB WIDTH ±.010	DIM E CORE DIAMETER ±.010	DIM F HUB DIAMETER ±.005	SET SCREW SIZE (QTY)
101-ZZ	3/8	1/4	1/8	1/4	1/4	1/4	4-40 (1)
103-ZZ	1/2	3/8	3/16	1/4	3/8	3/8	6-32 (1)
104-ZZ	1/2	1/2	3/16	1/4	3/8	3/8	6-32 (1)
106-ZZ	1/2	3/8	1/4	1/4	3/8	3/8	6-32 (1)
107-ZZ	1/2	1/2	1/4	1/4	3/8	3/8	6-32 (1)
109-ZZ	5/8	3/8	3/16	1/4	7/16	7/16	6-32 (1)
110-ZZ	5/8	1/2	3/16	1/4	7/16	7/16	6-32 (1)
111-ZZ	5/8	5/8	3/16	1/4	7/16	7/16	6-32 (2)
113-ZZ	5/8	3/8	1/4	1/4	7/16	7/16	6-32 (2)
114-ZZ	5/8	1/2	1/4	1/4	7/16	7/16	6-32 (2)
115-ZZ	5/8	5/8	1/4	1/4	7/16	7/16	6-32 (2)
117-ZZ	3/4	1/2	1/4	1/4	7/16	7/16	6-32 (2)
118-ZZ	3/4	5/8	1/4	1/4	7/16	7/16	6-32 (2)
119-ZZ	3/4	3/4	1/4	1/4	7/16	7/16	6-32 (2)
302-ZZ	1	1/2	1/4	1/4	3/4	9/16	8-32 (2)
304-ZZ	1 1/4	3/4	5/16	1/4	3/4	9/16	8-32 (2)
306-ZZ	1 5/8	3/4	3/8	3/8	1	1	10-32 (2)
308-ZZ	2	3/4	3/8	3/8	1 1/2	1	10-32 (2)
310-ZZ	2 1/2	1	1/2	1/2	1 1/2	1	1/4-28 (2)

CROSS SECTIONAL VIEW THROUGH CENTER LINE OF ROLLER



NOTES:

- △1 CORE - 303 SATINLESS STEEL
- △2 POLYURETHANE, POLYESTER: 55A BLUE OR 70A ORANGE
- △3 -ZZ PORTION OF PART NUMBER REFERS TO HARDNESS FOR 55A USE -55 & FOR 70A USE -70

TOLERANCES:	POLYDRIVE INDUSTRIES	
	MESA, ARIZONA	
	PART NO. SEE TABLE	REV A
	HUBBED DRIVE ROLLER, STANDARD	
	SCALE: NONE	DATE: 11/30/01
	DRAWN BY: PM	
	MATERIAL: SEE ABOVE	

UNLESS OTHERWISE SPECIFIED ALL DIMENSIONS ARE IN INCHES